

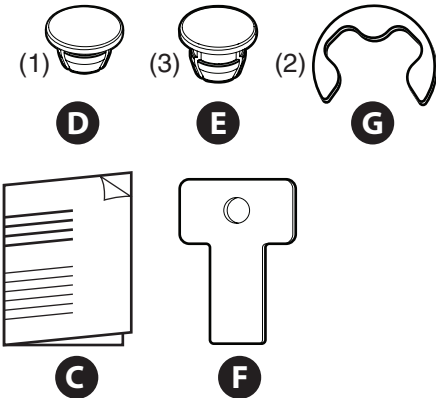
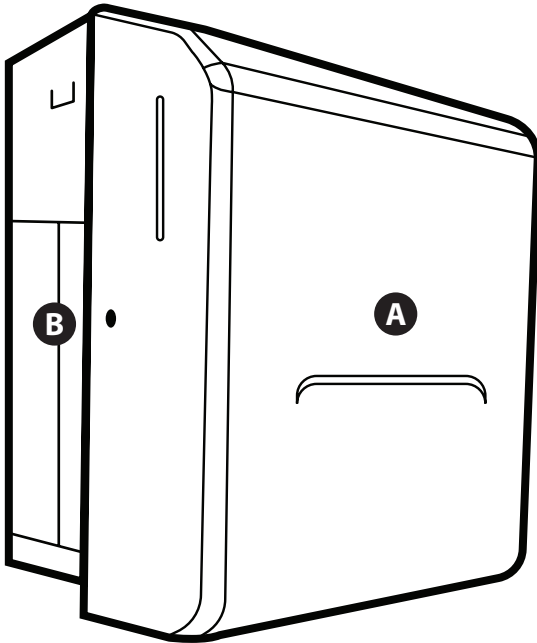
Installation instructions for the KIMBERLY-CLARK PROFESSIONAL™ SCOTT® PRO
STAINLESS STEEL RECESSED DISPENSING SYSTEMS Code: 31501

IMPORTANT! For secure mounting, follow instructions thoroughly.

These instructions are for installation
with studs on 16" centers.

Rough Wall Opening:

- 11 1/8" Wide
- 15 3/8" High
- 4" Min. Depth



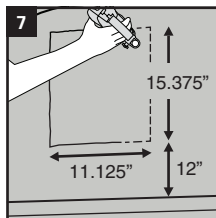
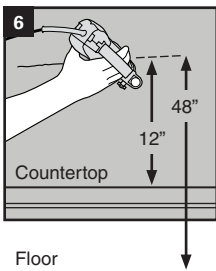
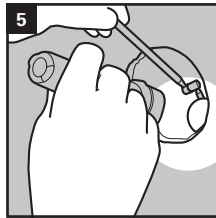
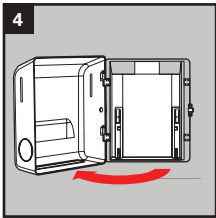
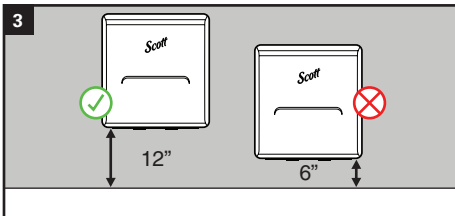
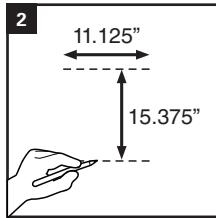
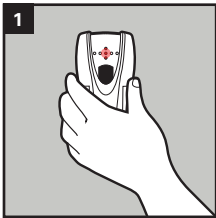
- A** Door
- B** Back Housing
- C** Instructions
- D** Silver Core Plug
- E** Black Swing Arm Plugs
- F** Key
- G** Retaining Clips

Installing the Stainless Steel Unit, Recessed in Wall - 31501

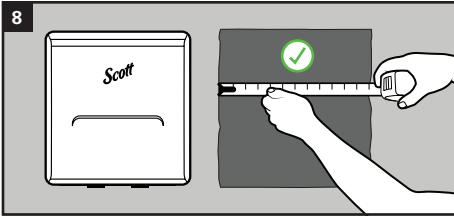
Materials Required:

- Manual or electronic module
- Tape measure
- Combination Square
- Screw Driver
- Rotary Cutter
- Right angle mirror
- Installation screws (4 – 2" 8 gauge)
- Installation screws (4 – 2.5" 8 gauge)
- Stud finder
- Flash light
- (2) 2 x 4" 's for framing
- (2) 1 x 4" 's for framing
- Hammer
- File
- Level
- 4 Shims (may or may not be needed)

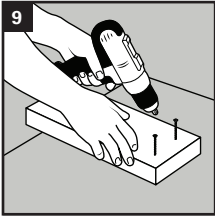
Note: This unit is for an install with studs on 16 inch centers or less.



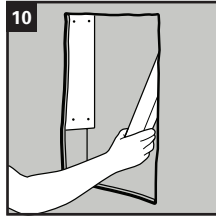
1. Determine the location to mount the dispenser using a stud finder and mark the rough wall opening. **(Figure 1 & 2)**
2. Note that it is important to install the dispenser **12 inches** above the counter or other obstruction. Please consider this when deciding where to install the dispenser. **(Figure 3)**
3. While measuring an installation location, note that the doors can be reversed. However, the door is set to open right to left. Ensure that you have adequate space to open the door in the area chosen. You will need a minimum of **8 inches** of clearance. **(Figure 4)**
4. Cut an investigation hole to ensure that there is not plumbing, electric, etc. in the install area and use a flash light or right angle mirror to check the area. **(Figure 5)**
5. The first cut for the install should be 12 inches from a counter and to be ADA compliant, the opening of the dispenser should be 48 inches from the floor. **(Figure 6)**
6. Now mark the rough wall opening and begin the cut. Ensure that you are at least 12 inches from the top of the counter. **(Figure 7)**



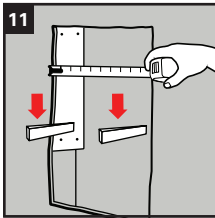
7. Test the fit of the dispenser in the hole.
(Figure 8)



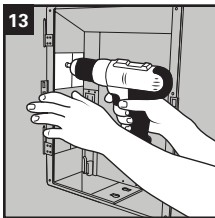
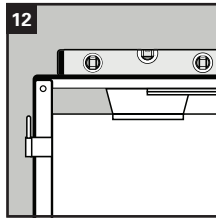
8. Determine if additional framing is needed for the install. For jobs on 16 inch centers, additional framing will be needed. Use 2 x 4" 's and 1 x 4" 's and balance the framing on each side as needed. (Figure 9 & 10)



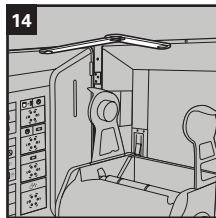
9. Measure the fit to the dispenser again to ensure that the fit will be right. Shims may be needed at this point. (Figure 11)



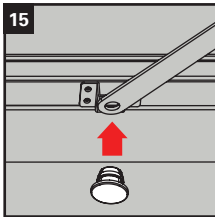
10. Install dispenser using 4 screws in the side of the housing attaching to the studs in the wall. Before adding screws, check to see that the unit is level. Add 2 screws on the top side and two on the bottom side of the housing. Do not overtighten. (Figure 12 & 13)

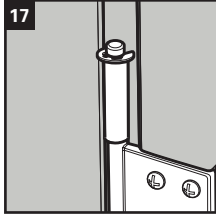
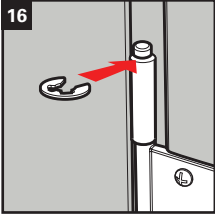


11. Insert the module by lining it up with the guides on the back housing and push down gently to click the module in place. For detailed instructions see the video on installing the module and loading the paper. The module is sold separately.



12. Add the operating label that comes with the module to the inside of the door, then install the door. The swing arm is taped to the back housing, remove tape and install the swing arm by using the black plug that came with the dispenser into the cover. This prevents the door from sagging. (Figure 14 & 15)





13. Add the retaining rings commonly known as “c” clips on the hinges for the door to keep the cover in place. **(Figure 16 & 17)**

14. Close the door. **(Figure 18)**

15. Add the use label that comes with the dispenser, it is now ready to use. **(Figure 19)**

