

Kimberly-Clark Filtration

684L Rigid Pleat Filtration Media

Kimberly-Clark 684L Rigid Pleat media delivers ASHRAE MERV 11[†] efficiency, low airflow resistance, and high dust-holding capacity, in a highly durable synthetic construction.

This proprietary media is comprised of synthetic fibers which are resistant to moisture, and will not promote microbial growth. The continuous thermally bonded fibers do not shed during manufacturing, and are less susceptible to damage in transit and in use compared to traditional glass media.

684L provides for a virtually indestructible pack for Minipleat, V-bank, Rigid Cell, and Aluminum Separator filters.

[†] In a well-constructed filter.



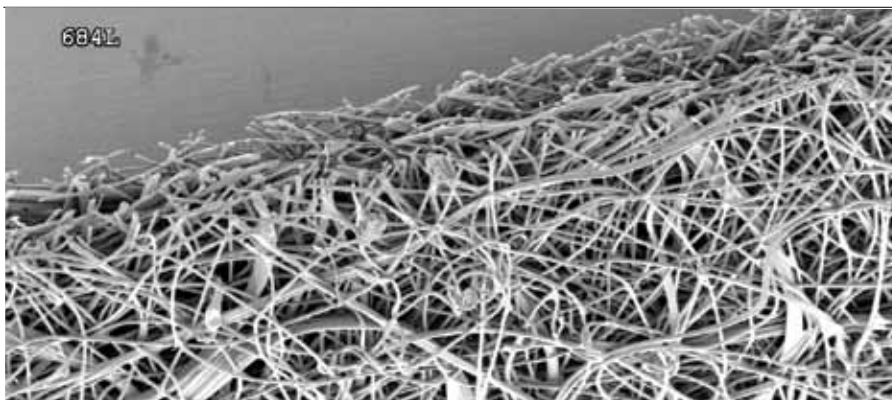


Attributes & Properties⁰

Name:	Intrepid* 684L Filtration Media
Color:	White
Basis Weight:	3.25 ounces per square yard Range 3.10 to 3.40 ounces per square yard 110 grams /square meter Range 105.1 to 115.3 grams per square meter
Efficiency¹:	48% Minimum 42% roll average
Air Permeability:	318 cubic feet of air/minute per square foot of media Minimum 303 cfm 1.62 cubic meter of air/second per square meter of media Minimum 1.54 meter ³ / sec per meter ² of media
Bulk:	0.043 inches Range 0.038 to 0.048 inches 1.09 millimeters Range 0.97 to 1.22 millimeters
MD Gurley Stiffness:	325 milligrams Min. 265 mg roll average
Production Reference:	NWFP-00035 / 1



For more information on
Kimberly-Clark Filtration Products,
visit us online at www.kcfiltration.com.



Photomicrograph of Intrepid* 684L Filtration Media

⁰ Unless otherwise noted, the material described in this document is available for commercial sale and sold with a limited warranty. Kimberly-Clark Corporation and/or Kimberly-Clark Worldwide retains all intellectual property rights to this material, including trademarks and trade names. If the material described is defined as developmental, the material properties are estimates only and are not warranted by Kimberly-Clark Corporation.

¹ Filtration efficiency determined using TSI Model 8130 automated filter tester using 0.1 µm count median diameter NaCl particles at 85 liters per minute.

Kimberly-Clark warrants that its products comply with K-C's standard specifications as of the delivery date to K-C's authorized distributors/direct purchasers. Except to the extent prohibited by applicable law: 1) **THIS WARRANTY IS IN LIEU OF ALL OTHER WARRANTIES, EXPRESS OR IMPLIED, INCLUDING ANY WARRANTY OF MERCHANTABILITY OR FITNESS FOR A PARTICULAR PURPOSE;** 2) K-C is not liable for any kind of special, incidental, or consequential damages; and 3) K-C's liability for breach of contract, tort, or other cause of action shall not exceed the product purchase price. Purchasers and users are deemed to have accepted the above warranty and limitation of liability, and cannot change the terms by verbal agreement or by any writing not signed by K-C. To the extent required by applicable law, K-C does not limit its liability for death/injury resulting from K-C's negligence.

**Reduce Today
Respect Tomorrow**

Reduce Today, Respect Tomorrow* is the KIMBERLY-CLARK PROFESSIONAL* approach to sustainability. It begins with the understanding that the way we use resources today shapes the world of tomorrow. And it has led us to focus on reducing consumption at every stage of the product lifecycle – from design and manufacture to distribution and disposal. Reduction is the key to lowering the environmental impact of our activities as well as those of customers. To learn more, visit www.kcpreducesustainability.com