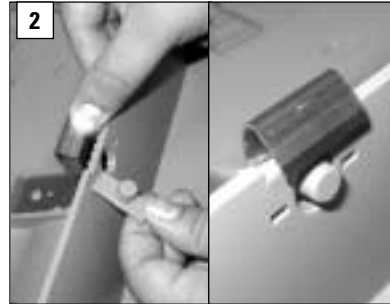


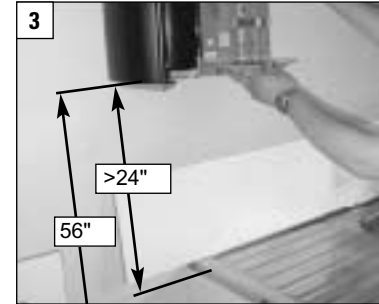
Roll Control Center-Pull System Mounting and Loading Instructions



- Contents:
- Dispenser
 - 4 inside plates (1x green installed and 3 x in plastic bag)
 - Pack of 4 fixing screws and wall plugs
Metal pronged key push button moulding
 - 1 pack of decorator strips if installing WINDOWS® Roll Control Dispenser #09337 (#772668)



- Dispenser can be opened by
(a) key or
(b) push button
- If key operation — Go to Step 3.
- If push-button:
- Place dispenser on its back
 - Unlock and fully open the door
 - Remove the decorator button by raising the lock spring (do not over-bend spring) and push out with small screwdriver.
 - Slip the push button moulding into place behind the lock spring. Push button must protrude through the hole in the dispenser side.
 - Check operation of the push button. Keep the key for possible future use.



- Hold dispenser firmly and squarely on wall
- Mark position of base of dispenser (not less than 56" from floor)
- Allow at least 24" clearance above a worktop for dispensing.



- Check that dispenser is vertical
- Open dispenser door and mark wall through 4 rear mounting holes.
- Drill 4 holes and insert the wall plugs.
- Using base marks as a guide, replace dispenser and fix to wall with the screws.
- Use mounting template (#770925) to aid in selecting mounting holes if required.

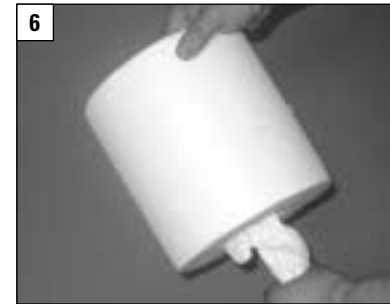


If using SCOTT® 1032 Roll Control Towels use the pre-fitted GREEN base plate. Go to Step 6.

If using WYPALL® Wipers or other Kimberly-Clark Towel Products remove the GREEN plate by rotating and lifting. Insert CORRECT plate by locating the lugs and rotating to align center marks on the upper face. Go to Step 6.

Keep the enclosed plates you may need them in the future.

- 1 blue — Asia
- 3 green — N. America
- 4 purple — S. Africa
- 5 gray — Australia



Remove core from roll.
Pull out a short length of the wiper.



Put the towel in the dispenser. Check that the pulled-out towel length is hanging clear in the base slots. Firmly close the door to click shut.



Pull towel straight down. Pulling at an angle will cause ripping. Grip towel as low as possible to avoid taking two towels at once. Pull at least 10 sheets to ensure the dispenser runs smoothly.

To re-load follow Steps 6, 7 and 8. Use only Kimberly-Clark Professional products for ROLL CONTROL SYSTEM with the correct color base plate - see Step 5.

REMEMBER ALWAYS GRIP LOW ON THE TOWEL AND ALWAYS PULL STRAIGHT DOWN.

For optimal product dispensing, mount dispenser base no less than 56" from floor and pull towel straight down.